

Engelhard (Map 1) Hyde County



Legend

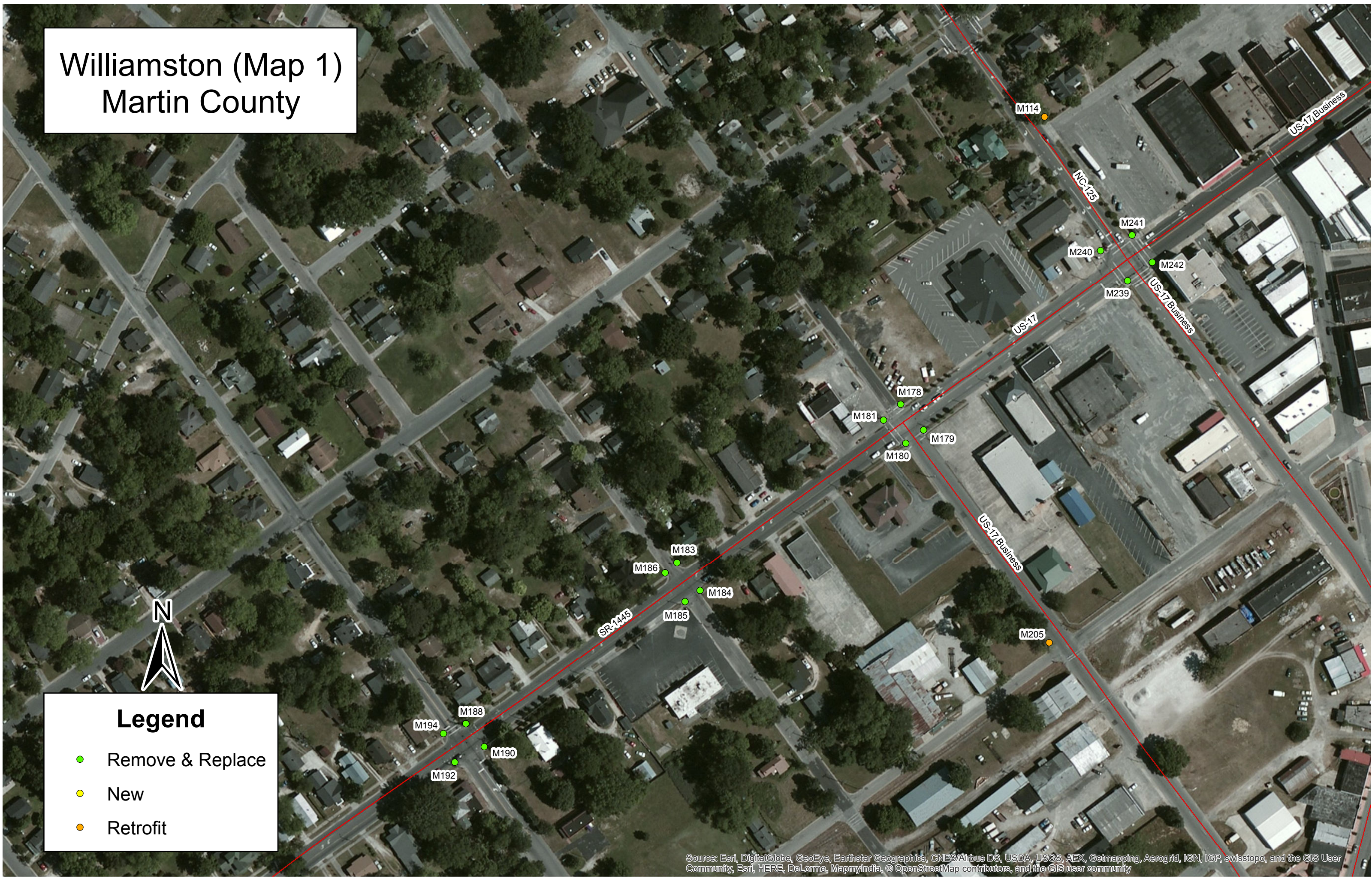
- Remove & Replace
- New
- Retrofit

Williamston (Map 1) Martin County



Legend

- Remove & Replace
- New
- Retrofit



Source: Esri, DigitalGlobe, GeoEye, Earthstar Geographics, CNES/Airbus DS, USDA, USGS, AEX, Getmapping, Aerogrid, IGN, ICP, swisstopo, and the GIS User Community, Esri, HERE, DeLorme, MapmyIndia, © OpenStreetMap contributors, and the GIS user community

Williamston (Map 2) Martin County



Legend

- Remove & Replace
- New
- Retrofit

Source: Esri, DigitalGlobe, GeoEye, Earthstar Geographics, CNES/Airbus DS, USDA, USGS, AEX, Getmapping, Aerogrid, IGN, ICP, swisstopo, and the GIS User Community, Esri, HERE, DeLorme, MapmyIndia, © OpenStreetMap contributors, and the GIS user community

Williamston (Map 3) Martin County



Legend

- Remove & Replace
- New
- Retrofit

Williamston (Map 4) Martin County



Legend

- Remove & Replace
- New
- Retrofit

Plymouth (Map 1) Washington County



Legend

- Remove & Replace
- New
- Retrofit

Source: Esri, DigitalGlobe, GeoEye, Earthstar Geographics, CNES/Airbus DS, USDA, USGS, AEX, Getmapping, Aerogrid, IGN, IGP, swisstopo, and the GIS User Community, Esri, HERE, DeLorme, MapmyIndia, © OpenStreetMap contributors, and the GIS user community

Plymouth (Map 2) Washington County



Legend

- Remove & Replace
- New
- Retrofit

Plymouth (Map 3) Washington County

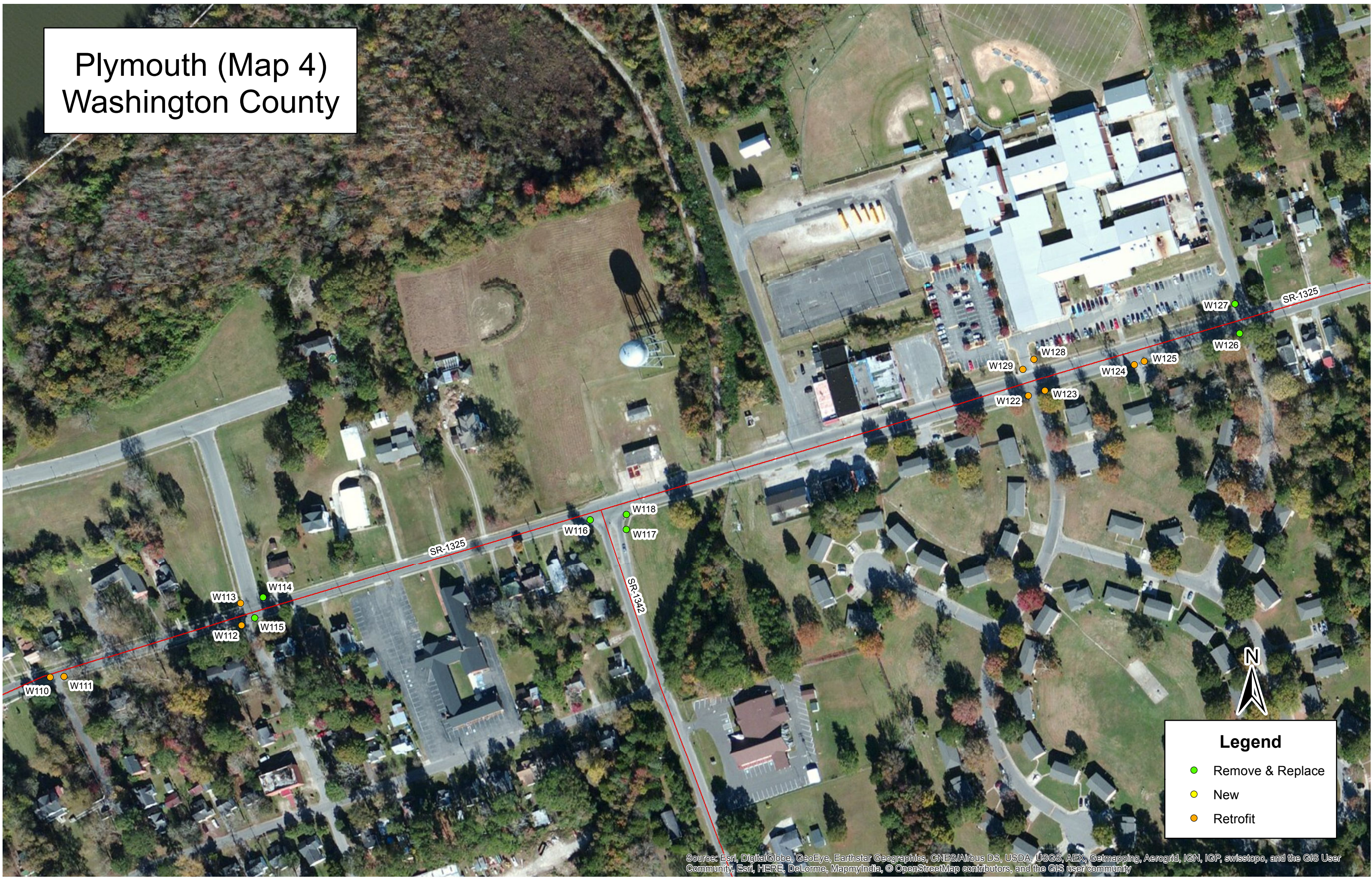


Legend

- Remove & Replace
- New
- Retrofit

Source: Esri, DigitalGlobe, GeoEye, Earthstar Geographics, CNES/Airbus DS, USDA, USGS, AEX, Getmapping, Aerogrid, IGN, IGP, swisstopo, and the GIS User Community, Esri, HERE, DeLorme, MapmyIndia, © OpenStreetMap contributors, and the GIS user community

Plymouth (Map 4) Washington County



Source: Esri, DigitalGlobe, GeoEye, Earthstar Geographics, CNES/Airbus DS, USDA, USGS, AEX, Getmapping, Aerogrid, IGN, IGP, swisstopo, and the GIS User Community, Esri, HERE, DeLorme, MapmyIndia, © OpenStreetMap contributors, and the GIS user community

County	Municipality	Major Route	Minor Route	Number of New Ramps	New Ramp ID	Number of Retrofit Ramps	Retrofit Ramp ID	Number of Remove & Replace	Remove & Replace ID	Historic District (Y/N)	Map #
HYDE	ENGELHARD	US-264	REST AREA	N/A		1	HY5	N/A		N	1
HYDE	ENGELHARD	US-264	SR-1103	N/A		2	HY4, HY6	N/A		N	1
HYDE	ENGELHARD	US-264	SR-1320	1	HY3	1	HY2	N/A		N	1
HYDE	ENGELHARD	US-264	YADKIN BANK	1	HY7	2	HY8, HY9	N/A		N	1
HYDE	ENGELHARD	US-264	START/END SIDEWALK	N/A		1	HY1	N/A		N	1
HYDE	ENGELHARD	US-264	SR-1101	1	HY26	N/A		N/A		N	1
MARTIN	WILLIAMSTON	US-17 BUS & NC-125		N/A		N/A		4	M239, M240, M241, M242	N	1
MARTIN	WILLIAMSTON	US-17 BUS & US-17 BUS S		N/A		N/A		4	M178, M179, M180, M181	N	1
MARTIN	WILLIAMSTON	US-17 BUS S	RAILROAD ST	N/A		1	M205	N/A		Y	1
MARTIN	WILLIAMSTON	US-17 BUS	MLK JR DR	N/A		3	M216, M217, M219	N/A		N	2
MARTIN	WILLIAMSTON	US-17 BUS	HUNTER ST	N/A		2	M220, M221	N/A		N	2
MARTIN	WILLIAMSTON	US-17 BUS	RAILROAD TRACK	N/A		2	M277, M278	N/A		N	2
MARTIN	WILLIAMSTON	US-17 BUS	ANDREW ST	N/A		1	M223	N/A		Y	2
MARTIN	WILLIAMSTON	US-17 BUS	FAULK ST	N/A		1	M224	N/A		N	2
MARTIN	WILLIAMSTON	US-17 BUS	MORRIS ST	N/A		1	M225	N/A		N	2
MARTIN	WILLIAMSTON	US-17 BUS	FIREHOUSE	4	M226, M280, M281, M282	1	M227	N/A		N	2
MARTIN	WILLIAMSTON	US-17 BUS	PEEL ST	N/A		1	M228	N/A		N	2
MARTIN	WILLIAMSTON	NC-125	SCHEWELS	N/A		1	M114	N/A		Y	1
MARTIN	WILLIAMSTON	NC-125	PINE ST	N/A		3	M150, M151, M152	N/A		N	3
MARTIN	WILLIAMSTON	NC-125	CHURCH DRIVEWAY	2	M153, M154	N/A		N/A		N	3
MARTIN	WILLIAMSTON		SR-1445 & PEARL ST	N/A		N/A		4	M183, M184, M185, M186	Y	1
MARTIN	WILLIAMSTON		SR-1445 & MLK JR DR	N/A		N/A		4	M188, M190, M192, M194	Y	1
MARTIN	WILLIAMSTON		SR-1450 @ MORATOC PARK	N/A		2	M273, M274	N/A		N	4
MARTIN	WILLIAMSTON		SR-1450 @ WILDLIFE LANDING	N/A		2	M275, M276	N/A		N	4
WASHINGTON	PLYMOUTH	US-64	SR-1342	N/A		1	W5	N/A		N	1
WASHINGTON	PLYMOUTH	US-64	PIGGLY WIGGLY	N/A		2	W6, W7	N/A		N	1
WASHINGTON	PLYMOUTH	US-64	PIZZA HUT	N/A		2	W8, W9	N/A		N	1
WASHINGTON	PLYMOUTH	US-64	ICE COMPANY	N/A		4	W10, W11, W112, W13	N/A		N	1
WASHINGTON	PLYMOUTH	US-64	SCHEWELS	N/A		3	W14, W15, W16	N/A		N	1
WASHINGTON	PLYMOUTH	US-64	SHELL STATION	N/A		5	W17, W18, W19 W20, W21	N/A		N	1
WASHINGTON	PLYMOUTH	US-64 & NC-32		N/A		2	W22, W23	N/A		N	1
WASHINGTON	PLYMOUTH	US-64	BRINKLEY PLACE ST	N/A		2	W24, W25	N/A		N	2
WASHINGTON	PLYMOUTH	US-64	RIVERSIDE SALES	2	W26, W27	N/A		N/A		N	2
WASHINGTON	PLYMOUTH	US-64	JEFFERSON ST	N/A		2	W28, W158	N/A		N	2
WASHINGTON	PLYMOUTH	US-64	GOLDEN SKILLET	N/A		4	W29, W30, W31, W32	N/A		N	2
WASHINGTON	PLYMOUTH	US-64	PINE TREE MOTEL	N/A		1	W33	N/A		N	2
WASHINGTON	PLYMOUTH	US-64	PEMBROKE DR	N/A		2	W34, W35	N/A		N	2
WASHINGTON	PLYMOUTH	US-64	LATHAM AVE	N/A		2	W36, W37	N/A		N	2
WASHINGTON	PLYMOUTH	US-64	WEST AVE	N/A		N/A		2	W38, W39	N	2

County	Municipality	Major Route	Minor Route	Number of New Ramps	New Ramp ID	Number of Retrofit Ramps	Retrofit Ramp ID	Number of Remove & Replace	Remove & Replace ID	Historic District (Y/N)	Map #
WASHINGTON	PLYMOUTH	US-64	ANNE ST	N/A		2	W40, W41	N/A		N	2
WASHINGTON	PLYMOUTH		SR-1325 & MONROE ST	N/A		4	W93, W94, W95, W96			Y	3
WASHINGTON	PLYMOUTH		SR-1325 & JEFFERSON ST	N/A		5	W88, W89, W90, W91, W92	N/A		Y	3
WASHINGTON	PLYMOUTH		SR-1325 & ADAMS ST	N/A		6	W99, W100, W101, W102, W103, W104	N/A		Y	3
WASHINGTON	PLYMOUTH		SR-1325 & MADISON ST	N/A		4	W106, W107, W108, W109	N/A		Y	3
WASHINGTON	PLYMOUTH		SR-1325 & LATHAM LANE	N/A		2	W110, W111	N/A		N	4
WASHINGTON	PLYMOUTH		SR-1325 & ANDREW JACKSON AVE	N/A		2	W112, W113	2	W114, W115	N	4
WASHINGTON	PLYMOUTH		SR-1325 & SR-1342	N/A		N/A		3	W116, W117, W118	N	4
WASHINGTON	PLYMOUTH		SR-1325 @ SCHOOL	N/A		2	W128, W129			N	4
WASHINGTON	PLYMOUTH		SR-1325 & ALBEMARLE DR	N/A		2	W122, W123			N	4
WASHINGTON	PLYMOUTH		SR-1325 & APARTMENT DRIVEWAY	N/A		2	W124, W125			N	4
WASHINGTON	PLYMOUTH		SR-1325 & CRESCENT DR	N/A		N/A		2	W126, W127	N	4
WASHINGTON	PLYMOUTH		SR-1335 & JEFFERSON ST	N/A		4	W70, W71, W72, W73	N/A		Y	3